

ENDOSPERM

Q. What it is?

Ans → The endosperm is the chief nourishing almost formless mass of tissue representing the main source of food for the developing embryo. Unlike gymnosperms, the endosperm in Angiosperms develops as a result of triple fusion i.e. the fusion of a haploid male gamete with two polar nuclei (or secondary nucleus). Thus in most of the cases, it is a triploid ($3n$) exceptions - *Oenothera* - $2n$
Paenia Fritillaria = $5n$ *Peperomia* = $5n$ tissue [and (i) formed after the act of double fertilization]

The endosperm may either be totally consumed in course of complete development of embryo so that the seeds are non-endosperm or ex- albuminous (eg- Pea, Bean, Gram) or it may persists in mature seeds and called endosperms or albuminous seed (eg- maize, wheat, castor etc)

TYPES OF ENDOSPERM :-

On the basis of mode of development, it may be three types -

(1) Nuclear Endosperm :-

In this type, the first and subsequent divisions are free nuclear and is not accompanied by wall formation. As divisions progress nuclei are pushed towards periphery in the embryo sac and centre is occupied by large vacuole.

After several free nuclear divisions, whose no. varies in different plants, endosperm enters cellular phase. In some plants cell wall formation never occurs eg - Lopezia, oxyspora but, however in Asclepias calotropis, wall formation occurs at very early stage

When endosperm has only achieved 8 or 16 nuclear stage. Whenever wall formation occurs, it is mostly centripetal and is first initiated towards the proembryo, later gradually extending towards the chalazal.

In number of plants wall formation does not occur in the central region & remains in free nuclear condition whereas in some plants into chalazal parts lie in free nuclear condition & elongate to form a haustorial structure of members of the family - Paraleceae.

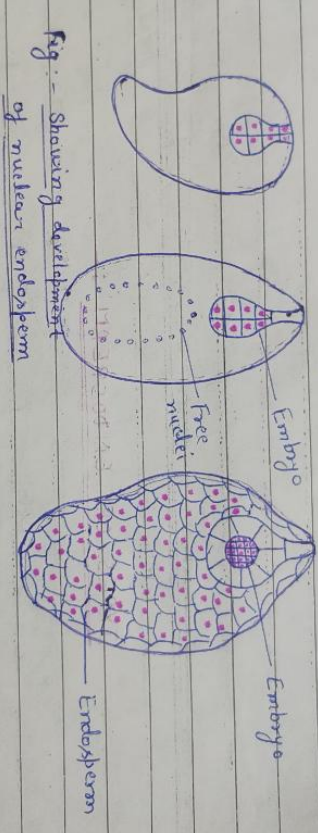
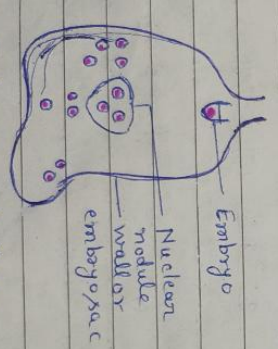
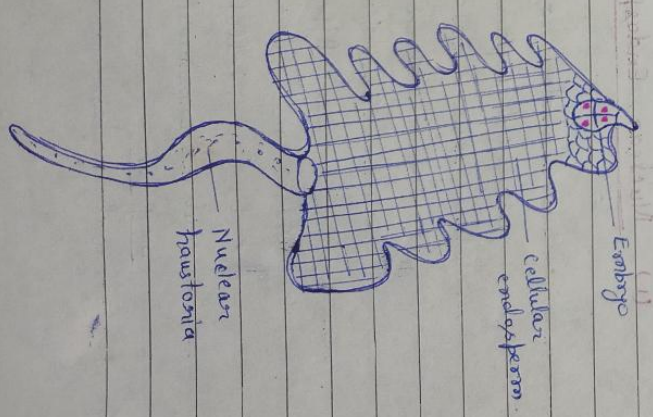


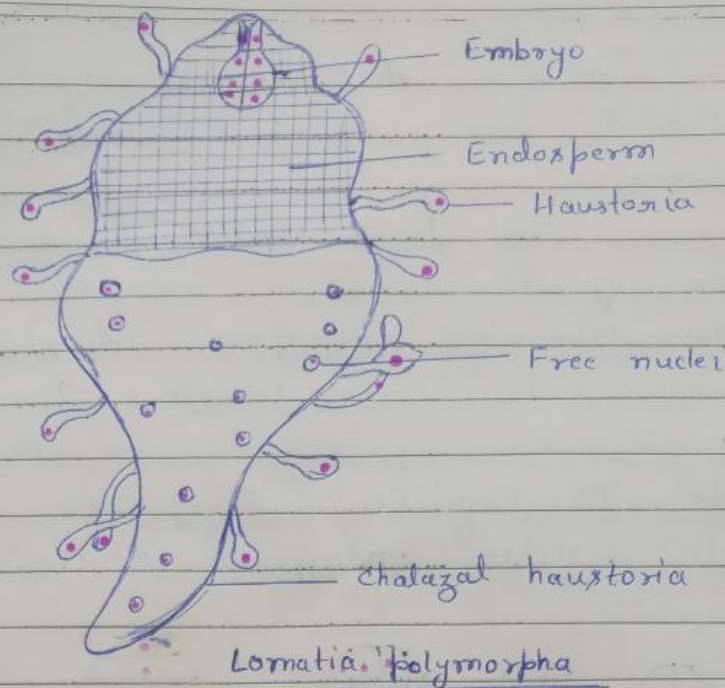
Fig. - Showing development of nuclear endosperm



Embryo sac of Musa shows showing free nuclear endosperm



Nucellar haustoria



Haustoria of nuclear endosperm:-

In many plants the developing nuclear endosperm may form one or more appendages that invade the nucellar tissue to derive nourishment for the developing endosperm. These are called "haustoria". Ex:-

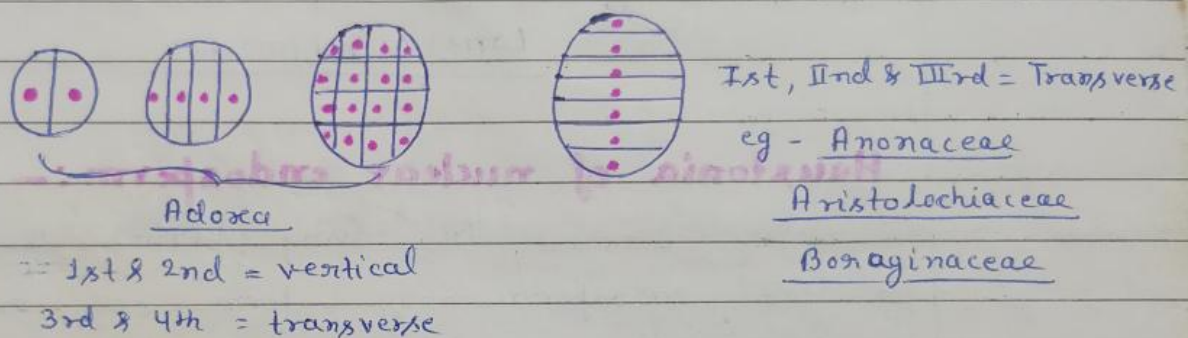
- In Giverillea robusta, a large called, tubular worm like free nuclear chalazal haustorium designated as the "verruiform appendages" develops.
- The lateral haustoria are developed in the members of family Caryophyllaceae.
- In addition to the main chalazal haustorium, numerous single celled finger shaped projections representing haustoria are developed around the endosperm in Lomatia polymorpha that increases the absorbing surface of the endosperm.

(2) Cellular Endosperm:-

[In the cellular type of endosperm, the primary endosperm nucleus divides and is followed immediately by the formation of

a wall so that the embryo sac becomes divided into several chambers from the very beginning.

The first wall may be vertical or in most of the cases, it may be transverse. This type of endosperm development is largely confined to dicot families. In monocots this development is obtained in Araceae, Lamnaceae etc. 72 families out of 288 investigated exhibit cellular endosperm development (DAVIS-1966).



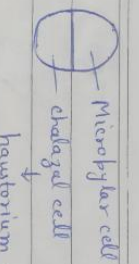
In Adoxa the first and the second division of endosperm mother cell is vertical as to form four cylindrical cells. The third division is transversed to result into 8 cells arranged in two tiers. The 4th division is also transversed but further division become irregular.

Transverse orientation of the first wall is common in Anonaceae, Aristolochiaceae, Beraginnaceae etc.

Hauptoria development :- Many types :-
 a) Development of chalazal haustorium → In Nymphaeaceae, Araceae [the

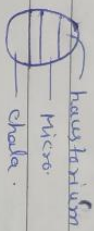
primary chalazal cells of the endosperm mother cell undergoes no further division and function directly as a haustorium]. Example - Iodina rhombifolia (Bhatnagar & Sadnarwal, 1969) The haustorium branches profusely at the free end to give a

coralline appearance



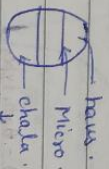
b) Development of Microphyllar haustorium →

Example - Symplocos raylei [The microphyllar chamber formed by the first division of the primary endosperm nucleus divides transversely into three cells. The uppermost cell forms a giant haustorium with branching arms extending up to funiculus. Other example = Magnolia abavata.



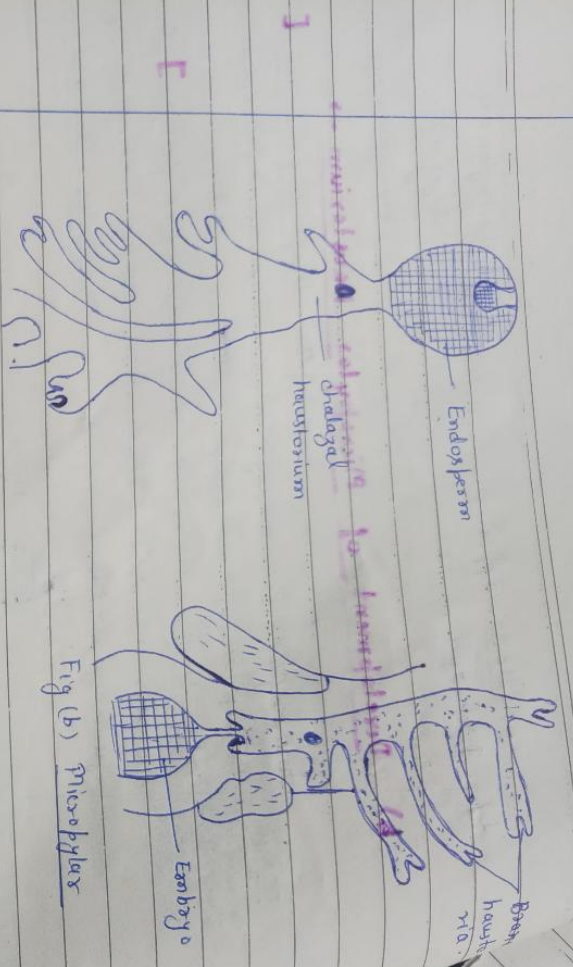
c) Development of both microphyllar & chalazal haustorium :-

In Nemophila the chalazal chamber formed after the first division of endosperm nucleus. This gives rise to a small chalazal haustorium. The microphyllar cell forms two daughter cells by a transverse division of which the upper becomes binucleate and form the microphyllar haustorium. The central cells develop into the main endosperm tissue.

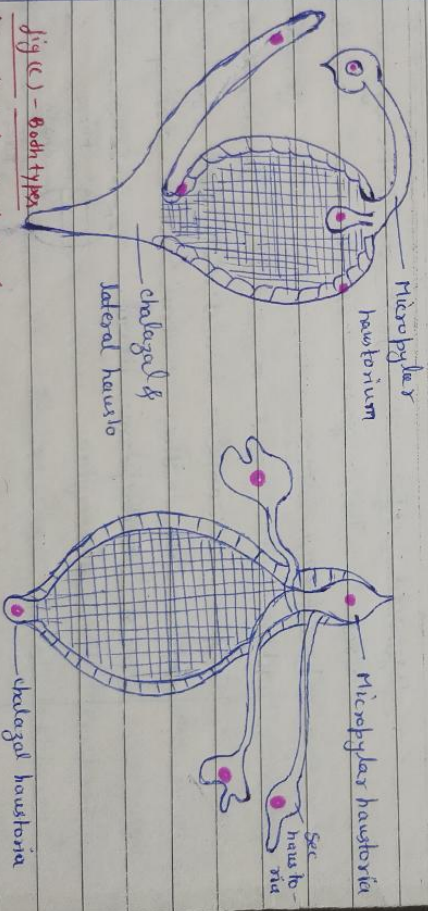


d) Development of secondary haustorium :-

In Centranthera, the microphyllar chalazal haustoria are formed but none of them is very active. So, there is the development of sec. haustoria from the endosperm cell just beneath the microphyllar haustorium. In case of Veronica, sec. haustorium arises from the chalazal region.



Nymphaeaceae, Araceae
 Fig (a) Chalazal haustorium in *Iodina rhombifolia*



ie. microphyllax & chalazal haustoria in *Nemophila aurita*

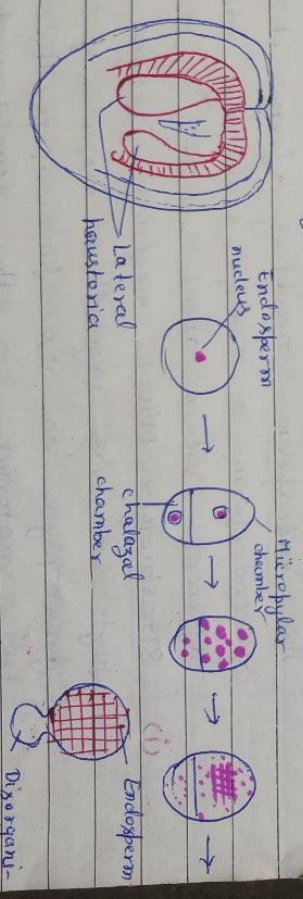
Fig (d) - Secondary haustorium in *Centranthema*

(3) **Helobial Type :-** This type of endosperm restricts largely to monocotyledon represents an intermediate type between the nuclear and cellular endosperm. It is known in 17 families of which 14 are monocotyledons.

In this type the first division of the primary endosperm nucleus results in the position of the embryo sac into two chambers - a large micropylar and small chalazal chamber. Several free nuclear divisions take place in the micropylar chamber. The nucleus of the chalazal chamber either remains undivided or undergoes only a small number of divisions. In older ovule that chalazal chamber begins to degenerate and cell formation takes place in the micropylar chamber to result into a cellular mass of tissue.

At this stage, the chalazal chamber is almost crushed and show only a few disorganised nuclei. Example - Eremurus, ogifia, persea, Sevachazaria. In the strawberry.

Hauatoria: - Development of distinct lateral haustoria is observed in Monochoria. The micropylar chamber shows active nuclear division and soon gives rise to two tubular outgrowths (haustoria) laterally which grow downward and invade the tissue of chalazal.

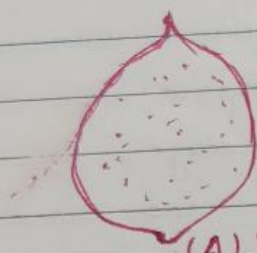


Endosperm of Monochoria
Fig - Endosperm forms

Ruminant endosperm: - Mature endosperm with any degree of irregularity and unevenness in its

surface contour is called ruminate endosperm. Irregularity is due to ingrowth of seed coat or, due to unequal radial elongation of cells of any one layer. eg. - Annonaceae, Rubiaceae, Aristolochiaceae.

Ruminate endosperm is not the 4th type of endosperm and it may belong to any one of the 3 categories of endosperm development.



(A) Surface view



Endosperm

Embryo

(B)

Ruminate endosperm of Antigonon

Morphological Nature of Endosperm →

We know that the endosperm nucleus is the outcome of the fusion of three haploid nuclei, viz. two polar and one σ nucleus (= triple fusion) and is, therefore, triploid ($3N$) and so also the endosperm resulting from it. The nature of endosperm is very confusing and there are different views about it: -

- (i) Strasburger (1900) regards it the female gametophyte or the vegetative tissue of the female gametophyte as its function is the storage of food material for the development of embryo and is formed after fertilization. From a triple fusion of nuclei by the process of free nuclear division like female gametophyte of gymnosperm.

This view was also supported by Colet and Chamberlain (1912). But in gymnosperm, the endosperm is the vegetative tissue of the female gametophyte and is formed before fertilisation, each cell of which has haploid (N) number of chromosomes, while each cell of the endosperm in Angiosperms has triploid (3N) number of chromosomes.

This view that the endosperm in Angiosperms is a vegetative tissue of the female gametophyte is discarded because a gametophyte is always haploid.

SARGANT (1900) considered it to be a sporophytic tissue, the twin of an embryo, as it is the result of the fusion of secondary nucleus with the second σ^7 gamete.

Applying the chromosome test also this view is discarded, because a sporophyte is always diploid (2n) whereas the endosperm is triploid (3N). Moreover, this view, also can not account for the development of the endosperm in conifers where endosperm nucleus is also diploid.

(iii) The more accepted view is that it can't be either gametophyte or a sporophyte in the strict sense of the terms due to its triploid nature. It might better be considered as an undifferentiated tissue containing the growth of the female gametophyte. Stimulation to develop by nuclear fusion should not be confused with the endosperm of gymnosperm, which is a female gametophyte. It also develops after fertilisation.

Function of Endosperm :-

The most important contribution of endosperm is to provide nourishment to the embryo during its early stages of development, as evidenced by the storage of nutritive material by this tissue as well as by the fact that embryo grows only when the endosperm develops properly. It is because of the fact that the young endosperm is rich in various growth hormones, such as - Auxins, Cytokinins and Gibberellins.

Besides nutrition the endosperm also regulates the precise mode of embryo developments.

Relationship among diff. types of Endosperms :-

We are still in dark regarding the phylogenetic sequence of evolution of various types of endosperm.

Shape of embryo :- Some workers reported that long and narrow embryo sacs generally have a cellular endosperm, while broad and short embryo-sacs have nuclear endosperm. (iii)

Rate of growth of embryo :- A/c to V.S. Rao (1938) those plants in which growth and differentiation of embryo take place rapidly have a free nuclear endosperm and others in which the growth is slow or the mature seed contains only an undifferentiated embryo have a cellular endosperm.

Rudimentary cell plate during with ageing of free nucleus :-

A/c to Sauter & Chamberlain (1903), the cellular type is more primitive than

nuclear type, since " even when the endosperm
begins with free nuclear division, a rudimen-
tary cell-plate often appears, suggesting divi-
sion form an endosperm in which nuclear
division was followed by cell formation."
Schubhoff (1926), one (1928), Gilissie (1925) supported
this view.

Most other authors consider reverse
derivation i.e from nuclear to the cellular type,
assuming cellular type to be more advanced.

However, this is still a debatable
question, since both types occur side by side
in the most primitive order. (eg. Ranales) as
well as the most advanced - (eg. - Campanu-
lales.)

